

# Continuous kiln

**West Forest Fraser Timber, Hinton Division  
Deltech Manufacturing Inc. Project # 7965**

by Severko Consultech Inc, Dubravka Todorovic, P.Eng,  
Dubravkatm@severko.com, 604.632.4113

August 2014



Kiln building-inside



Kiln building



Support Bent under Truss, PD-05



Support Bent under Truss



Steel bent for truss w/footing



Tower for walkway w/footings PD-04



Tower for walkway w/footings



Walkway beams along short side



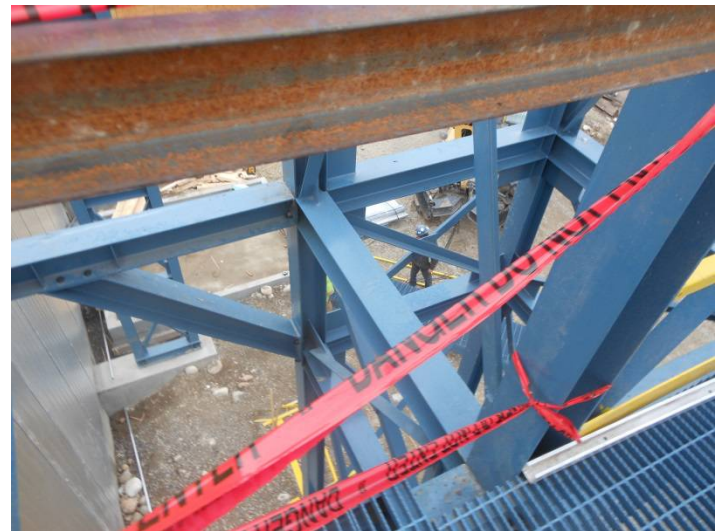
Walkway beams  
before grating  
placed



Kiln building-top walkway



Support tower for  
walkway



Support tower for truss and  
walkway



Support tower for truss and walkway



Support tower for walkway



Footings for walkway bents



Footing for walkway bent with anchors



Sideview on kiln building



New electrical room-top



Walkway bent-at the bottom



Walkway bent with bottom cross beam w/anchors



Bent X-Brace/welded



Tower 5'x5' (X-braced)



Tower 5'x5' with platform for stairwell



Truss Tower  
w/footing



Bent supporting stairwell and  
walkway



Truss tower and walkway bents in  
view



Bent supporting  
stairwell/anchorage





Bent supporting stairwell/footings



Stairwell w/tower  
in view